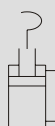




MTAS Double acting -
Single side clamping arm

MTAD Double acting -
Double sides clamping arm



Features:

- These swing clamps are used when it is required to keep the fixture workpiece area free of straps and clamping components for unrestricted workpiece loading and un-loading.
- This pneumatic clamping element is a pull type cylinder, There are five standard sizes, and for each size two versions of standard clamping arms, mounting of these clamping arms at any angle within 360.

Note :

- Please don't exceed 1.5 times of the original length, if it is necessary to increase the length of the clamping arm.
- Suggested to install a flow control valve protect cylinder barrel and internal components against fretting wear.

Specification

Model	MTAS	MTAD
Acting type	Double acting	
Tube I.D. (mm)	25, 32, 40, 50, 63	32, 40, 50, 63
Power fluid	Filtered air with or without lubrication	
The range of pressure	1~10.3 kgf/cm ²	
Max. pressure	14.7 kgf/cm ²	
Material of cylinder barrel	Anodised aluminium alloy	
Standard angle of rotation	90° ±2° (Angle of 0° , 45° and 60° are optional)	
Rotating direction	Clockwise or counter clockwise	

Order example:

MTAS — 25 — CW — 90

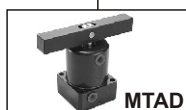
MODEL

TUBE I.D.

ROTATING ANGLE
90° : Standard rotation



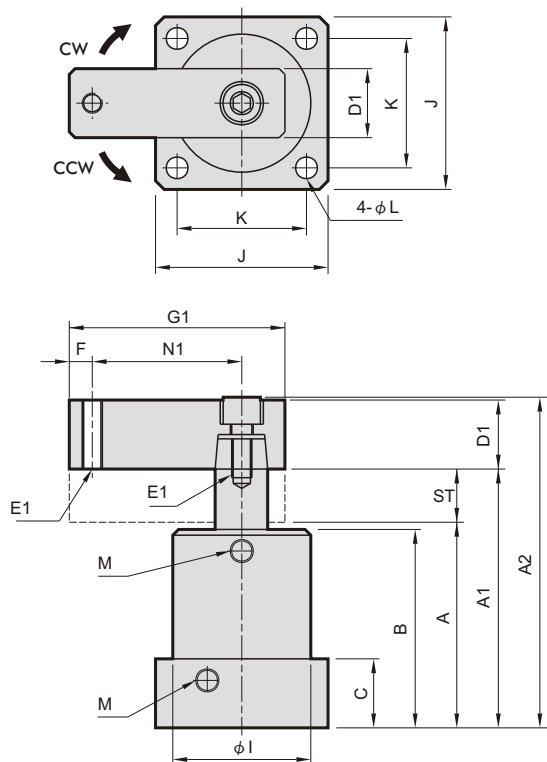
MTAS



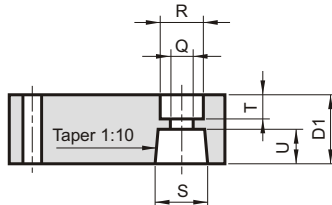
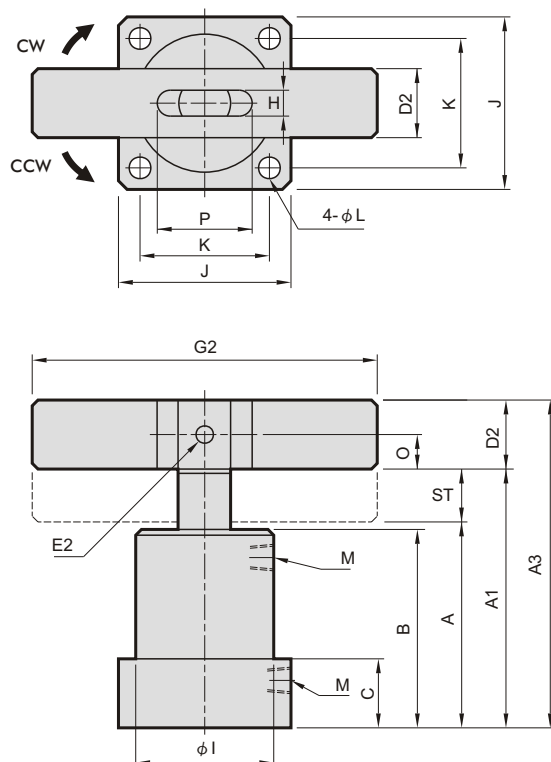
MTAD

ROTATING DIRECTION
CCW: Counter clockwise
CW: Clockwise

MTAS



MTAD



Property table

Model	Bore (mm)	Piston rod (mm)	Swing stroke (mm)	Clamping stroke (mm)	Pressure area push/ pull (mm ²)	Clamping force N (0.6MPa)
MTAS-25	φ 25	φ 14	11	11	491 / 337	200
MTAS-32	φ 32	φ 16	13	13	804 / 603	360
MTAS-40	φ 40	φ 16	13	13	1257 / 1056	630
MTAS-50	φ 50	φ 20	15	15	1963 / 1649	980
MTAS-63	φ 63	φ 20	15	15	3117 / 2803	1680

Dimensional table

Code Model	A	A1	A2	A3	B	C	D1	D2	E1	E2	F	G1	G2	H
MTAS-25	67	89	(107.3)	-	65	23	□15.9	-	M6×1.0P	-	6	50	-	-
MTAS-32	82	108	(129.5)	127	78	28	□19	□19	M8×1.25P	φ 8	8	70	140	9
MTAS-40	82	108	(129.5)	127	78	28	□19	□19	M8×1.25P	φ 8	8	75	140	9
MTAS-50	94	124	(152.4)	146.2	90	31	□25.4	□22.2	M10×1.5P	φ 8	10	85	160	10
MTAS-63	94	124	(152.4)	146.2	90	31	□25.4	□22.2	M10×1.5P	φ 8	10	95	160	10

Code Model	I	J	K	L	M	N1	O	P	Q	R	S	ST	T	U
MTAS-25	φ 35	38	30	φ 4.6	M5×0.8P	35	-	-	φ 6.8	φ 11.5	φ 14	22	5	8.5
MTAS-32	φ 46	50	40	φ 5.6	PT 1/8	50	9.5	23	φ 9	φ 14	φ 16	26	7	9.5
MTAS-40	φ 55	60	48	φ 6.8	PT 1/8	55	9.5	23	φ 9	φ 14	φ 16	26	7	9.5
MTAS-50	φ 65	70	57	φ 6.8	PT 1/8	60	11.1	29	φ 11	φ 18	φ 20	30	9	12.5
MTAS-63	φ 78	83	67	φ 9	PT 1/8	70	11.1	29	φ 11	φ 18	φ 20	30	9	12.5